

## MODELS



WALL



MONO



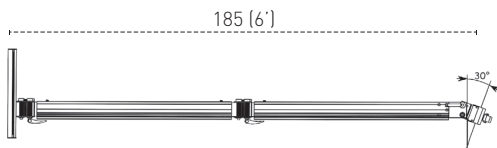
DUO



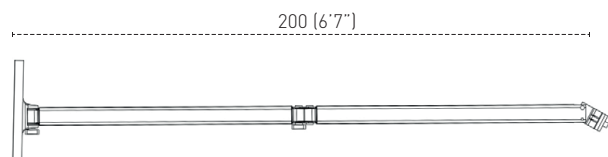
MULTI

## VERSIONS

Paraflex classic holder  
Traditional – SQ 190 / R 270



Paraflex Neo holder  
Contemporary – SQ 230 / R 300



## POSITIONS



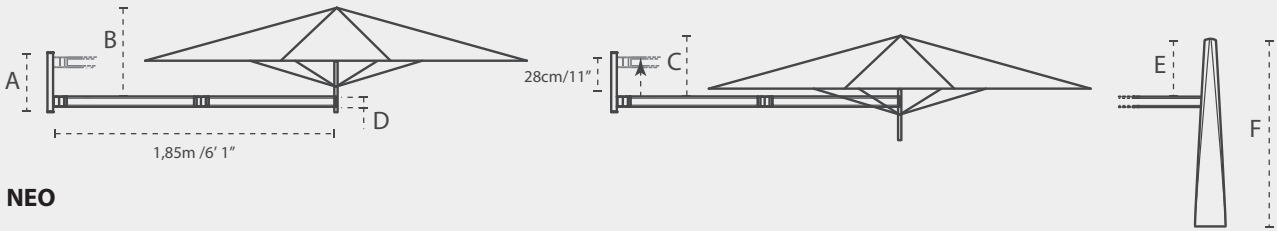
## COLORS

	Marble	Curacao	Mint	Blush	Pepper	Almond	Sand	Blue Storm	Flanelle	Black
<b>SUNBRELLA</b>										
<b>SOLIDUM</b>										

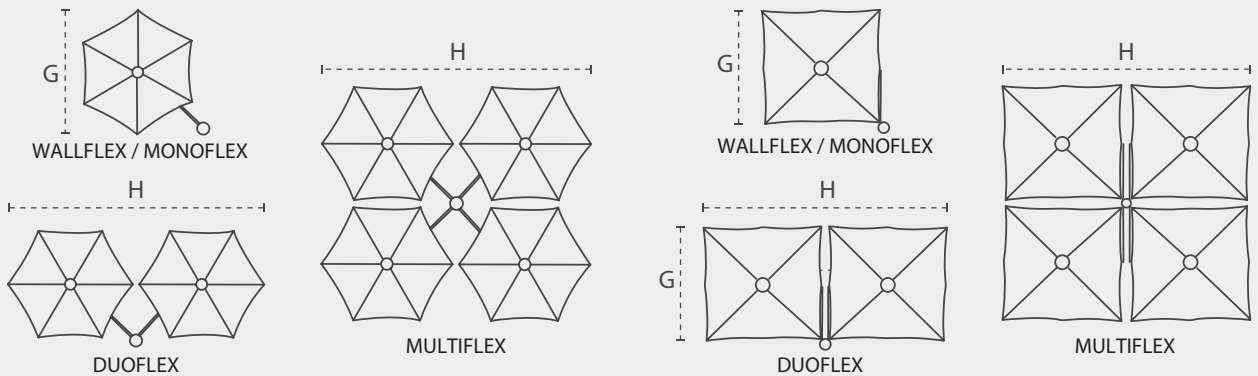
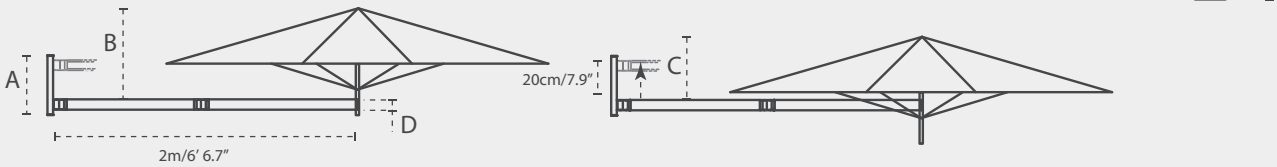
All colors of the Sunbrella fabric range furniture grade Solids' (no stripes or patterns) are available on special request with a minimum order quantity of 10 pcs. Contact Umbrosa for more information.

DIMENSIONS

CLASSIC



NEO

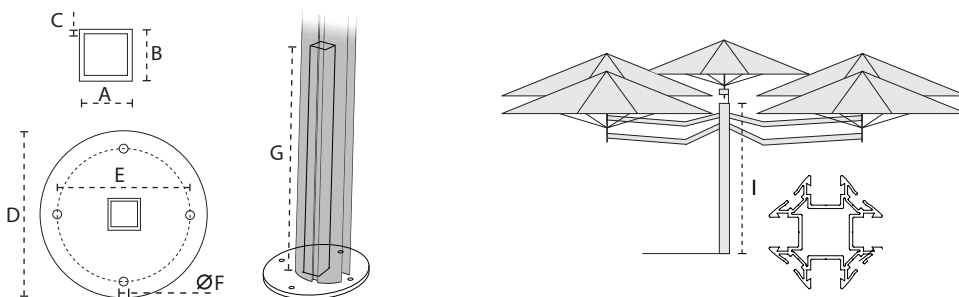


	+/- 2% T-----I	A cm/inch	B cm/ft	C cm/ft	D cm/inch	E cm/ft	F cm/ft	G cm/ft	H cm/ft
	2.7m/8' 10"	34/13.4"	70/2' 3.5"	45/1' 6"	6/2.4"	45/1' 6"	135/4' 5"	270/8' 10"	540/17' 9"
	3m/9' 10"	34/13.4"	70/2' 3.5"	45/1' 6"	6/2.4"	45/1' 6"	150/4' 11"	300/9' 10"	600/19' 8"
	1.9m/6' 3"	34/13.4"	70/2' 3.5"	45/1' 6"	6/2.4"	45/1' 6"	135/4' 5"	190/6' 3"	380/12' 6"
	2.3m/7' 6.6"	34/13.4"	70/2' 3.5"	45/1' 6"	6/2.4"	45/1' 6"	163/5' 4"	230/7' 7"	460/15' 1"

ROUND SUPPORT AND POLE OPTIONS

ROUND SUPPORT

MULTI POLE

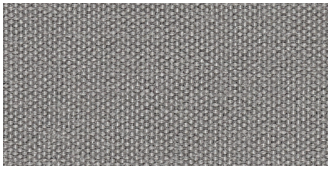


Material: Galvanised steel 8mm/0.3"

	A mm/inch	B mm/inch	C mm/inch	D mm/inch	E mm/inch	F mm/inch	G mm/inch	H cm/ft	I cm/ft
Round Support	40/1.6"	40/1.6"	3/0.12"	215/8.5"	170/6.7"	11/0.43"	490/19"	220/7'3"	230/7'6"

For non-permanent base options – see spec sheet Installation Options

## MATERIALS



### FABRIC

Solidum – 100% Acryl 250 gr/m<sup>2</sup>  
 Sunbrella – 100% Acryl 260 gr/m<sup>2</sup>  
 More details – see spec sheet Fabrics



### RIBS

Naturally anodized aluminum profiles



### POLE

Naturally anodized aluminum

### OTHER MATERIALS

Grip: PA6 30% Glass fiber  
 Gear plates of stainless steel  
 Umbrella parts: PA6  
 Hinges: marine grade, stainless steel (316)

For projects – consult Umbrosa for powder coating finish options (RAL).  
 Contact us for the details on the MOQ.

## PACKAGING & TRANSPORT

PARAFLEX	L (cm)	W (cm)	H (cm)	Weight (kg)	L (")	W (")	H (")	Weight (lbs)
Box classic holder 1,85m/6'11"	107,0	15,3	16,5	5,00	3'6"	6"	6"1/2	11.0
Box Neo holder 2m/6'6.7"	107,0	15,3	16,5	5,31	3'6"	6"	6"1/2	11.7
Box single pole 2,2m/7'3"	225,5	10,0	8,5	5,81	7'4"	4"	3"	12.8
Box multi pole 2,3m/7'6"	235,0	13,0	13,0	9,00	7'8"1/2	5"	5"	19.8
Umbrella	max. 190	15,0	15,0	2,62-4,06	Max 6'3"	6"	6"	5.7-8.9

## NICE TO KNOW

- Spare parts available
- Designed and manufactured in Belgium
- Warranty between 15 and 2 years, see Warranty Sheet
- Download manual (QR-code included)
- Storage bag optional (PU coated fabric)
- Wind speeds up to 6 beaufort, 50 km/h, 31 mph when base is permanently fixed (for details, please check our pricelist)
- Tested at TU Delft

The content of this document, in particular the mentioned models, is protected by copyrights and/or design rights. The present document and its content is communicated to you for information purposes only. Any partial or total reproduction or any other use without our prior written permission is strictly prohibited. This technical sheet remains subject to possible changes. Of course we do our best to eliminate all mistakes, but Umbrosa is not responsible for the errors in the documentation of products. All measurements are approximate and are provided for informational purposes only.